



Image by [Richard Behr](#) on [Unsplash](#)

Quarterly Problem

- Green Edition -

Park ranger's worries



Magnificent avenues of horse chestnut trees have adorned the city parks for over a hundred years. Have you ever taken a closer look at the remarkable inflorescences and striking leaves? Was it also a pleasure for you in kindergarten to craft figures from the shiny horse chestnut fruits?



Brainstorm-Box

Do research on the stresses to which trees are exposed in urban areas. Are there tree species that are more robust than others?

During his tours through the park, the park ranger notices changes in the horse chestnut trees that cause him concern. The horse chestnut leaves already show yellowish to brown, elongated spots in early summer and die off completely by late summer. Can this be a problem for the tree? What could be the cause? What role can the amount of rainfall at this location or the air pollution play? Are fungi or animals perhaps the cause of this phenomenon? Or is climate change to blame for the suffering of the trees?

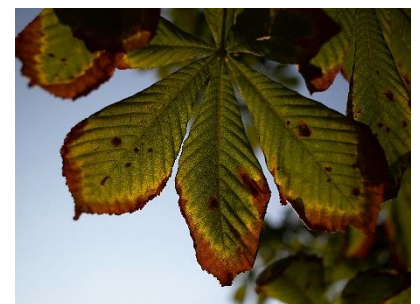


Image by [Oleksii Piekhov](#) on [Unsplash](#)

Whose method is the most accurate?

Phrase your approach in a clear and comprehensible way.
Also state what foundation you have used for your estimations.

© Andrea Frantz-Pittner & Christina Pichler-Koban, Alpen Adria Universität Klagenfurt 2020;
International Centre for STEM Education (ICSE) 2020
Licence granted.
Picture Sources in post: [Georg Eiermann](#) on [Unsplash](#); [Bernd Dittrich](#) on [Unsplash](#)

